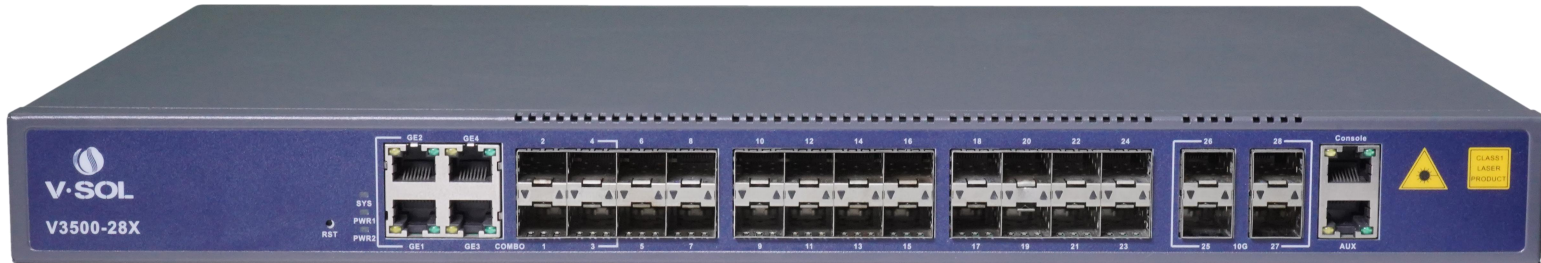




For more information,
please scan this code:



V3500-28X

L3 MANAGED ETHERNET SWITCH

Key Features:

- Rich business functions: OSPF/BGP/IPv6
- Power backup
- Easy to manage and friendly interface

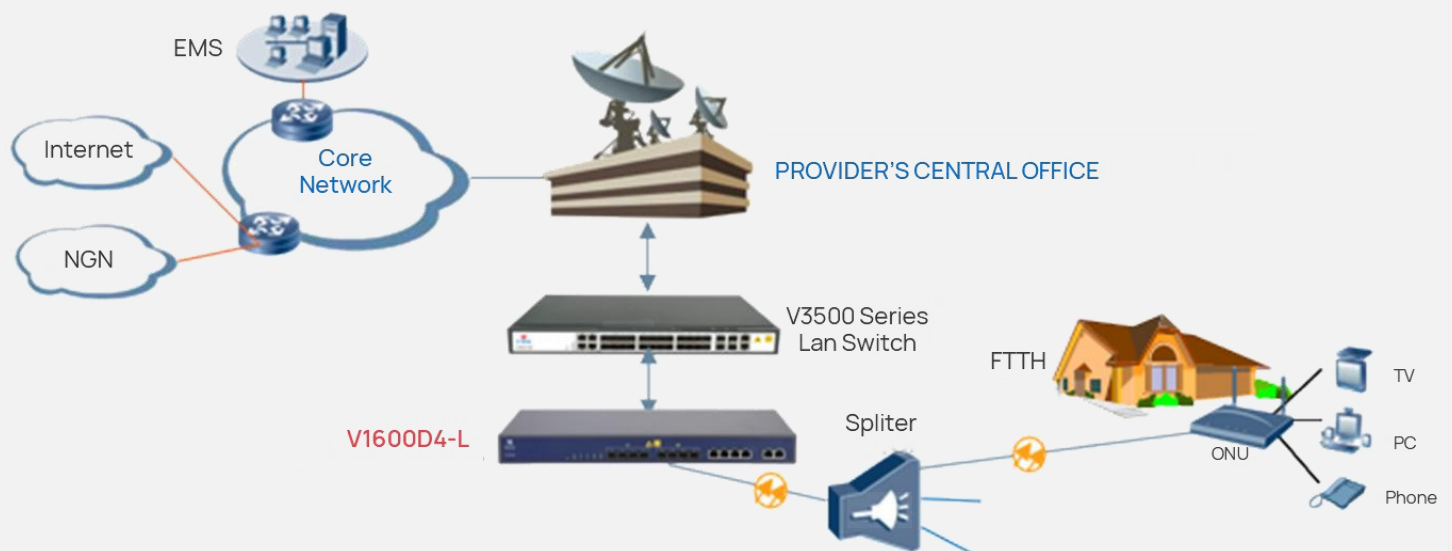


Introduction:

The V3500-28X series switches are brand-new enhanced gigabit access switches that provide all-GE electrical downlink ports and fixed 4*GE & 4*10GE uplink ports.

It provides 4 Gigabit ports(Combo) and 24 SFP user ports and 4 SFP and 4 SFP+ uplink ports, which can meet the requirements of Gigabit access or convergence network. The product has L3 features such as OSPF/BGP/IPv6 to meet the application requirements of voice, video, and data services, and is widely used in the access of enterprise networks and campus networks. It provides the users with a high-performance, easy-to-manage, easy-to-expand, and low-cost solution when it comes to Gigabit to desktop solutions.

Application Chart:



V3500-28X

24 SFP User Ports L3 MANAGED ETHERNET SWITCH

Technical Specifications:

Management Ports

- 1*10/100BASE-T out-band port,
- 1*CONSOLE port

Rich Business Functions

- Supports RIP/OSPF/BGP/IPv6 to meet the application requirements of voice, video, and data services

High Reliability & Safety

- Dual power backup
- Static/LACP link aggregation
- Support L2/L3/L4-based ACL flow identification and filtering security mechanism
- Support port isolation
- Support SYN Flood of TCP attacks and UDP Flood attacks
- DHCP Snooping, DHCP Option 82
- Command line hierarchical protection

Management Mode

- SNMP/Telnet/CLI/WEB/SSHv2
- Support TFTP to Upload & Download File
- CLI command style similar to mainstream manufacturers

Management Function

- Fan Group Control
- Port Status monitoring and configuration management
- User management
- Alarm management
- Logo DIY

Layer2 Switch

- 16K Mac address
- Support 4096 VLANs
- Support port VLAN and protocol VLAN
- Support VLAN tag/Un-tag ,VLAN transparent transmission
- Support VLAN translation and QinQ
- Support storm control based on port
- Support port isolation
- Support port rate limitation
- Support 802.1D and 802.1W
- Support static LACP
- QoS based on port, VID, TOS and MAC address
- Access control list
- IEEE802.x flow control
- Port stability statistic and monitoring

Multicast

- IGMP v1/v2, IGMP Snooping,IGMP Fast Leave
- Multicast group quantitative limitation
- Multicast Traffic cross-VLAN replication

IPv6

- Support IPv6 SNMP/Telnet/Https
- Support IPv6 neighbor discovery, stateless address auto configuration,IPv6 access control list
- Support MLD v1/v2,MLD Snooping

DHCP

- DHCP server/DHCP relay/DHCP snooping

Layer 3

- ARP proxy
- Static route,1024 hardware Host Routes,512 hardware Subnet Routes
- RIPv1/v2, OSPFv2

Item		V3500-28X
Chassis	Rack	1U 19 inch standard box
1G User Port (Combo)	QTY	4
	Physical Interface	RJ45
	Forward Rate	1Gbps
1G User Port	QTY	24
	Physical Interface	SFP Slots
	Forward Rate	1Gbps
10G Uplink Port	QTY	4
	Physical Interface	SFP+ Slots
	Forward Rate	10Gbps
Switching Capacity (Gbps)		128
Throughput (Mpps)		95.232
Dimension (LxWxH)		442*285*43.6mm
Weight		4.2kg
AC Power Supply		AC:100~240V, 50/60Hz
DC Power Supply		DC:-36~-75V
Power Consumption		35W
Operating Environment	Working Temperature	0~+50°C
	Storage Temperature	-40~+85°C
	Relative Humidity	5~90% (non-condensing)

Ordering Information:

Product Name	Product Description	Power Configuration	Accessories
V3500-28X	20*GE(SFP)+4*GE (SFP/RJ45 combo) + 4*10GE/GE(SFP+)	1*AC power 2*AC power 2*DC power 1*AC power + 1* DC power	1G SFP module 10G SFP+ module