



V11XX Series Switch

Unmanaged Switch

Key Features:



Support Port Auto-flip (Auto MDI/MDIX)



Support working status indicator display to help fault analysis



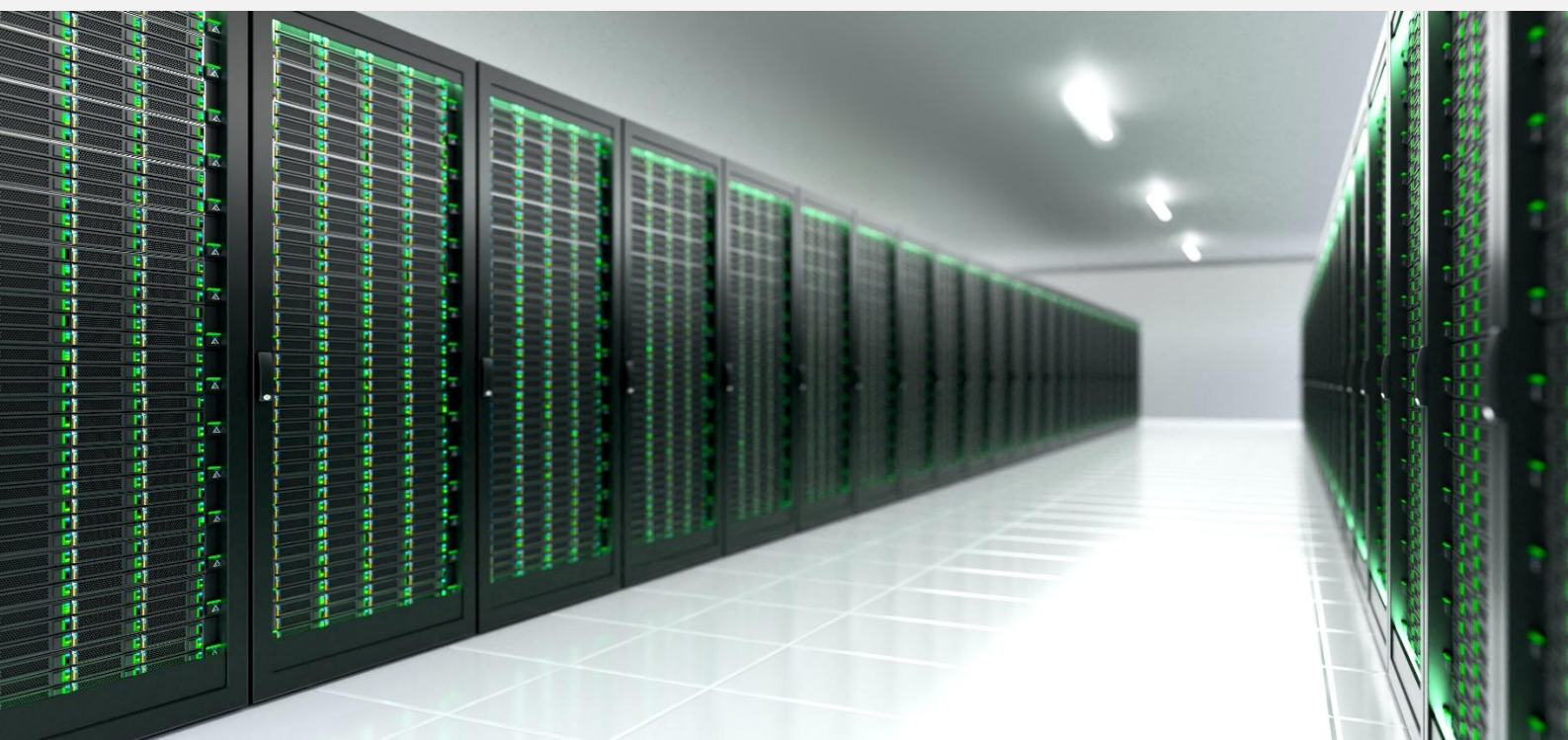
One-key smart switch, supports VLAN, Default, Extend



Support QoS data priority

Introduction:

VSOL V11XX series switches adopt high-quality and high-speed network ICs, and this product completely solves the problem of noise of small switches in the office environment through the fanless mute design. V11XX Series Switch has multiple Gigabit RJ45 ports, can provide seamless connection for 10/100/1000M Ethernet, supports three working modes, one-key smart simple switching working mode, easy to manage and maintain, the product can be widely used in Security network video surveillance, hotel, campus, small and medium-sized enterprise network engineering and other occasions.



Model Lists



V1105

- 4*GE (RJ45) ports
- 1*GE(RJ45, Uplink)ports



V1108

- 6*GE (RJ45) ports
- 2*GE(RJ45, Uplink)ports



V1116

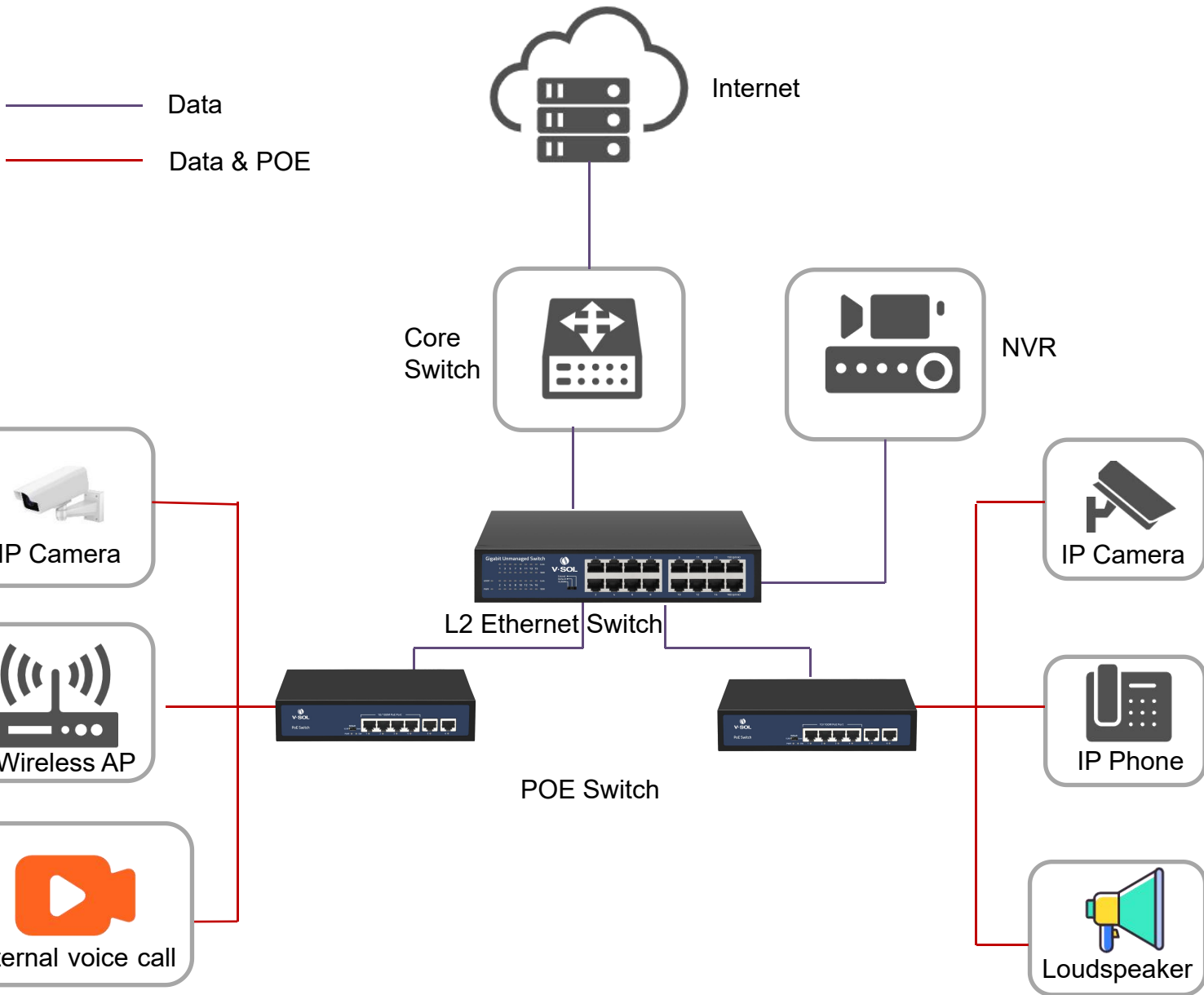
- 14*GE (RJ45) ports
- 2*GE(RJ45, Uplink)ports



V1124-2S

- 24*GE (RJ45) ports
- 2*GE (SFP, Uplink) ports

Application Diagram



Specifications

Parameter		V1105	V1108	V1116	V1124-2S
Interfaces		4*GE(RJ45)+ 1*GE(RJ45, Uplink)	6GE(RJ45)+ 2*GE(RJ45, Uplink)	14*GE(RJ45)+ 2*GE(RJ45, Uplink)	24*GE(RJ45)+ 2*GE(SFP, Uplink)
Chassis	Dimensions (L*W*H)(mm)	87*54*23	138*78*25	220*161*44	440*204*44
	Weight (KG)(empty)	0.130	0.241	0.900	2.360
Package	Dimensions (L*W*H)(mm)	90*88*58	175*120*63	315*215*85	500*290*85
	Weight (KG)(empty)	0.200	0.321	1.240	2.930
Switching Capacity(Gbps)		10	16	32	52
Throughput(Mpps)		7.44	11.9	23.8	38.68
Packet Buffer		1M	2.5M	4M	4M
MAC Address		1K	1K	8K	8K
Jumbo Frame		2Kbytes	2Kbytes	4Kbytes	9.6Kbytes
Transfer Mode		Store and forward	Store and forward	Store and forward	Store and forward
MTBF(Hours)		100,000	100,000	100,000	100,000
Power Voltage	Input Voltage	AC 100-240V/50-60Hz	AC 100-240V/50-60Hz	AC 100-240V/50-60Hz	AC 100-240V/50-60Hz
	Power Supply	DC 5V/1A	DC 5V/1A	DC 12V/1A	DC 12V/2A
Indication		PWR, Link	PWR, Link	PWR, LOOP, Link, 1000M	PWR, Link/Act, 1000M

Features

Network protocol

- IEEE802.3(10Base-T)
- IEEE802.3u(100Base-TX)
- IEEE802.3ab(1000Base-TX)
- IEEE802.3x(Flow control)

Industry Standard

- EMI: FCC Part 15 CISPR(EN55032) class A
- EMS: EN61000-4-2(ESD)
- EN61000-4-4(EFT)
- EN61000-4-5(Surge)

Network Medium

- 10Base-T: Cat3, 4, 5 or above UTP(≤100m)
- 100Base-TX: Cat5 or above UTP(≤100m)
- 1000Base-TX: Cat5 or above UTP(≤100m)

Working Environment

- Working Temperature: -10 ~ 50°C
- Storage Temperature: -40 ~ 70 °C
- Working Humidity : 10%~90%, non-condensing
- Storage Temperature: 5%~90%, non-condensing
- Working Height: Maximum 10,000 feet
- Storage height: Maximum 10,000 feet

LED Indicators

- PWR: Power indicator
 - (1) Light up: Power on normally
 - (2) Flash light: Power failure
- LOOP: Loop Alarm
 - (1) Light up: There is a LOOP
 - (2) Flash light: NO LOOP
- Link/Act: Network Link
 - (1) Light up: Link connection
 - (2) Flash light: Data transmission
 - (3) Light off: Link exception
- 1000M
 - (1) Light up: 1000M link
 - (2) Light off: 100M link or link failure

DIP Switch

- V1105(Without DIP Switch)
Only support Default mode, all ports can communicate with each other;
- V1108(Without DIP Switch)
Only support Default mode, all ports can communicate with each other;

- V1116

- (1) VLAN: Port Isolation, 1-14 ports are isolated each other, all communicate with uplink port 15/16;
- (2) Default: Default mode, Support loop alarm;
- (3) Extend: Monitor Mode, 1-14 ports support 100M speed reduction negotiation, support 250 meters in 10Mbps/s mode, port 15 and port 16 as uplink port

- V1124-2S

- (1) VLAN: Port Isolation, 1-24 ports are isolated each other, all communicate with uplink port 25/26
- (2) Default: Default mode, all ports can communicate with each other;
- (3) Extend: Link extension mode, 9-24 ports supply data transmission distance can be extended to 250 meters, the transmission rate becomes 10M